

产品规格书

Specification

产品名称 (Product): 7 寸 AHD 液晶显示模组/7inch AHD TFT LCD module

驱动板 (Driver board): JDLA70T01B

版本号 (Version): VER:1.00

液晶屏 (TFT LCD): ATO70TN90-DM570-18SG

客户名称 (Customer): _____

客户型号 (Cust.P/N): _____

日期 (Date): _____

客户 CUSTOMER			承制方 MANUFACTURER		
品质 Quality	工程 Engineer	审批 Approved	审核 Checked	批准 Approved	销售 Sales

目 录 Contents

目 录 Contents.....	2
版本 Version.....	3
1. 概 况 Profile.....	4
2. 基本参数 Specifications.....	4
3. 产品图片 Product Picture.....	5
4. 连线示意图 Wiring Diagram.....	5
5. 驱动板接口定义 Interface Definition.....	6-7
6. 结构图 Structure.....	8
7. 产品标示 Labels.....	9
8. 包装运输 Packing Shipping.....	9
9. JDLA70T01B 调试注意事项 Notes.....	9
10. 7.0"TFT- LCD PANEL 判定标准 Judgment.....	10-12

版本更改 Version

日期/Date	版本/Ver.	修改版本/Modification
2018-08-26	R1.00	第一版(First Version)

1. 概况 Profile:

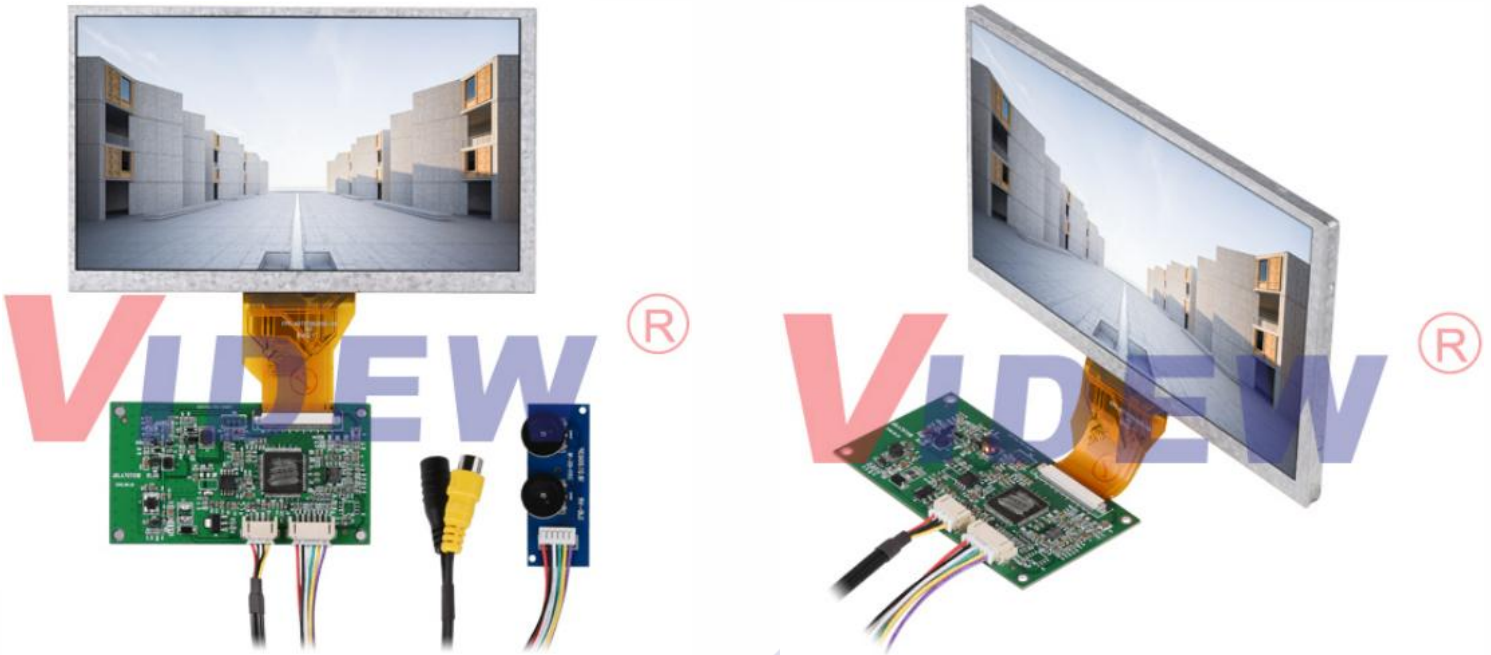
JDLA70T01B VER1.00-ATO70TN90-DM570-18SG AHD 液晶显示模组，由 JDLA70T01B VER: 1.00 存储驱动板和 (ATO70TN90-DM570-18SG) 屏组成。可输入 TVI、CVI、CVBS 和 AHD 信号，有 PAL 制和 NTSC 两种制式，可实现制式自动识别，电位器调节彩色、亮度对比度，OSD 菜单支持语言为英文。它主要用于可视门铃、可视电话、楼宇对讲等其它显示电子设备。

JDLA70T01B VER1.00-ATO70TN90-DM570-18SG AHD TFT LCD module is composed by JDLA70T01B VER:1.00 driver board and ATO70TN90-DM570-18SG panel . It can input TVI, CVI, CVBS and AHD signals, with PAL and NTSC system format (auto switch) . It's color and brightness contrast ratio can be adjusted by potentiometer, OSD menu support language is English. The product is mainly used for video door phone or other display electronic equipments.

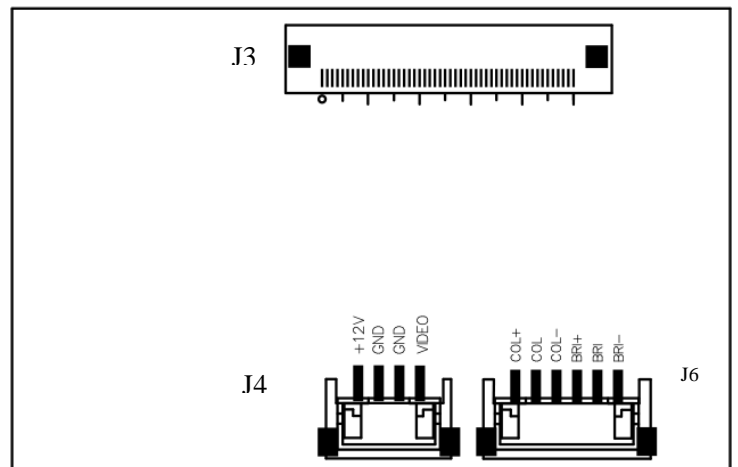
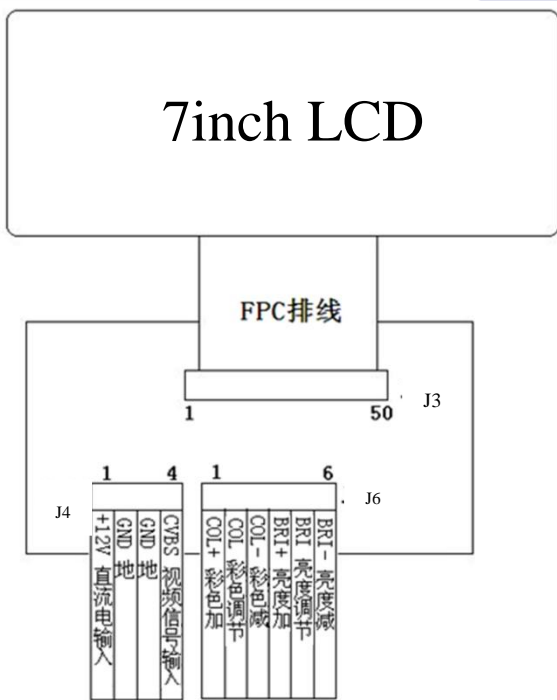
2. 基本参数 Specifications:

No.	项目/Item	说明/Description	Note
1	液晶屏显示尺寸/LCD Display	7.0 英寸/7inch	
2	显示比例/Display Ratio	16:9	
3	背光方式/Backlight	LED	
4	亮度/Brightness	210-260 cd/m ²	
5	解析度/Resolution	800×3 (RGB)×480	
6	视角范围 View angle	(50/70/70/70) up/down/left/right	
7	液晶屏尺寸/LCD dimension	164.9 (W) ×100.0 (H) ×5.15 (D) mm	
8	有效显示范围/Effect area	154.08 (H) ×85.92 (V) mm	
9	驱动板尺寸/Driver board size	92.39 (W)×50.14(H) ×6.7(D)mm	
10	工作电压 (纹波小于 0.3VP-P) Working Voltage (Wave<0.3VP-P)	最小: DC7V; 标准: DC12V; 最大: DC18V; Min:DC7V; Standard: DC12V; Max: DC18V;	
11	工作电流 (DC 12V 供电时) Working Current (DC 12V supply)	DC450mA ±20mA	
12	消耗功率/Power Consumption	5.4W (TYP)	
13	启动时间/Start Time	≤2.0 秒 ≤2.0 s	
14	工作温度范围/Working Temp.	-10℃~60℃	
15	储存温度范围/Storage Temp.	-20℃~70℃	
16	环境相对湿度/ENV. Humidity	5~95%RH	

3. 产品图片/Product Picture:



4. 连线示意图/Wiring Diagram:



5. 驱动板接口定义/Interface Definition:

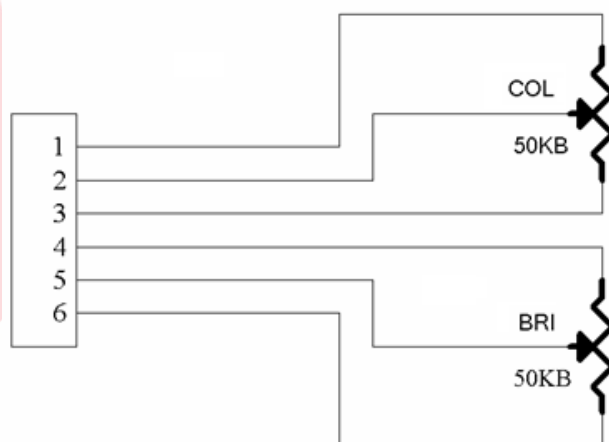
5.1. J4 接口定义/J4 Interface Definition:

PIN	Function	I/O/P	脚位定义说明/PIN Definition	Note
1	+12VIN	I	+12V 直流电源输入/+12V DC IN	9-15V
2	GND	P	地/Ground	
3	GND	P	地/Ground	
4	CVBS	I	视频信号输入/Video signal input	0.3-1.8Vp-p

5.2. J6 接口定义/J6 Interface Definition:

PIN	Function	I/O/P	脚位定义说明/PIN Definition	Note
1	COL+	I	彩色加/ Color+	
2	COL	I	彩色调节/ Color adjustment	Value:0-3.3V
3	COL-	I	彩色减/ Color-	
4	BRI+	I	亮度加/ Brightness+	
5	BRI	I	亮度调节/ Brightness adjustment	Value:0-3.3V
6	BRI-	I	亮度减/ Brightness-	

5.2.1、电位器规格：50KB（直线型） / Potentiometer Spec.: 50KB（Line type）



5.3、J3 接口定义/ J3connector definition: (50PIN 0.5mm)

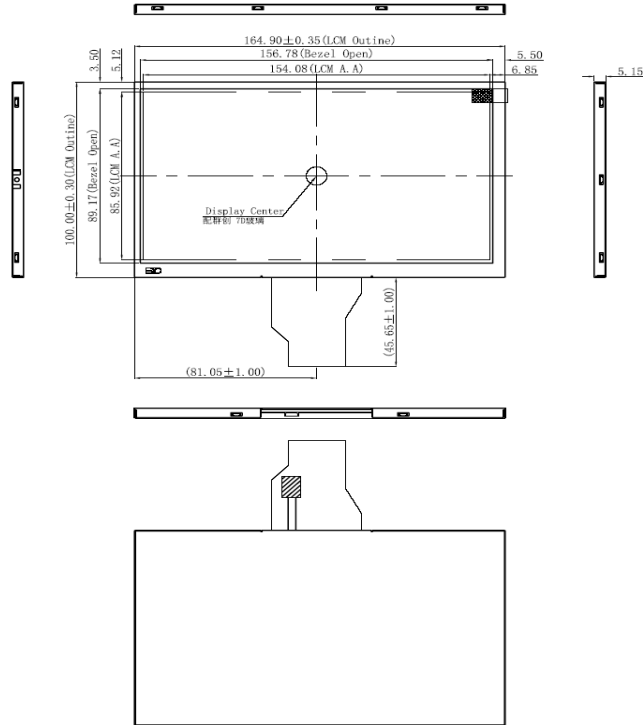
PIN	Function	I/O/P	脚位定义说明/PIN Definition	Note
1-2	VLEDA	P	Power for LED backlight(Anode)	
3-4	VLEDK	P	Power for LED backlight(Cathode)	
5	GND	P	Power ground	
6	Vcom	I	Common voltage	
7	DVDD	P	Digital Power	
8	MODE	I	DE/SYNC mode select Normally pull high H;DE mode.L:HSD/VSD mode	
9	DE	I	Data Enable signal	
10	VSD	I	Vertical sync input. Negative polarity	
11	HSD	I	Horizontal sync input. Negative polarity	
12	B7	I	Blue Data Input(MSB)	
13-18	B1-B6	I	Blue Data Input	
19	B0	I	Blue data Input (LSB)	
20	G7	I	Green data Input (MSB)	
21-26	G1-G6	I	Green data Input	
27	G0	I	Green data Input (LSB)	
28	R7	I	Red data Input (MSB)	
29-34	R1-R6	I	Red data Input	
35	R0	I	Red data Input (LSB)	
36	GND	P	Power Ground	
37	DCLK	I	Clock Input	
38	GND	P	Power Ground	
39	SHLR	I	Left or Right Display Control	
40	UPDN	I	Up/Down Display Control	
41	VDDG	P	Positive Power for TFT	
42	VEEG	P	Negative Power for TFT	
43	AVDD	P	Analog Power	
44	RSTB	I	Global reset pin Active low to enter reset state. Suggest to connecting with an RC reset circuit for stability. Normally pull high.(R=10KΩ, C=1μF)	
45	NC	-	No connection	
46	Vcom	I	Common Voltage	
47	DITH	I	Dithering setting DITH="H"6bitresolution(last 2 bitofinputdatatruncated) DITH="L"8bitresolution(default setting)	
48	GND	P	Power Ground	
49-50	NC	-	No connection	

6、结构图:

6.1、TFT LCD Panel:

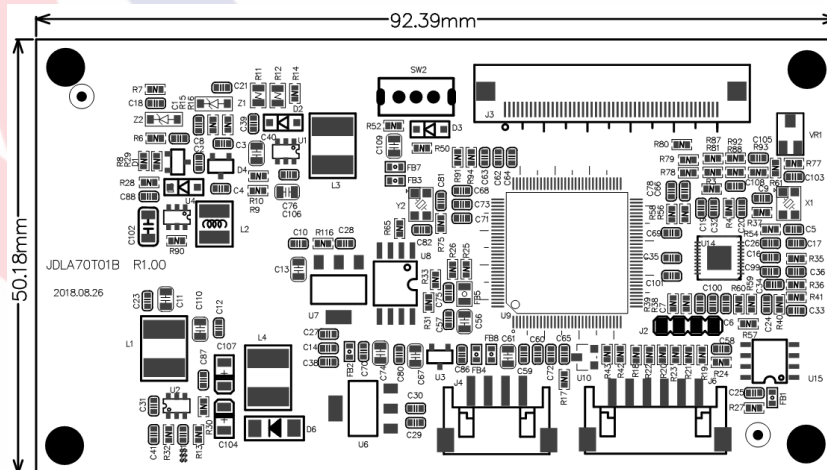
Drawing Of LCM:
模组图:

未注公差: ± 0.30



1. Un-dimensioned tolerance is $\pm 0.3\text{mm}$
示注公差 $\pm 0.30\text{mm}$
2. "☆": Important dimension.
标有☆为重要尺寸
3. 外形测量需测试前、中、后3点。

6.2. PCB 尺寸/PCB size: 92.39 (W)×50.18(H)×6.7(D)mm



7. 产品标示/Product Label:

ATO70TN90-DM570-18SG

8. 包装、运输及贮存/Packing Shipping

8.1. 供货包装/Packing

TBD

8.2. 运输及贮存/Shipping

运输过程避免碰撞和雨雪淋袭；严禁与化学物品及潮湿物品同库贮存。

Don't hit and rain when transportation: Don't storage with chemic goods and wet goods together.

9. JDLA70T01B 调试注意事项/Notes

9.1. TFT 出厂前已用专用仪器进行精密调试和老化、测试，一般不需要再做调整。

TFT have used by special instrument to adjust precision and aging, test before leave factory, no need adjust again.

9.2. 调整前，应正确连接电源、视频信号，应数次开关电源以及视频信号检查图像情况。

Please correctly connect power, video signal before you adjust, should be on/off power and video signal to check the image's effect.

9.3. 因为此产品为电子产品，请注意防静电。

Due to this product is electronic product, please notice prevent static.

9.4. 7.0" TFT- LCD PANEL 为玻璃制品，小心拿放，以免破裂。

7.0" TFT-LCD Panel is a glasswork, place carefully ,broken for fear

9.5. 按电位器时需注意不能让手碰到电位器引脚，因人体有一定的电阻，如触摸到会对电位器功能造成影响。

When pressing the potentiometer, it should be noted that the hand should not touch the potentiometer pin, because the human body has certain resistance, such as touching will affect the function of the potentiometer.

10. 7.0"TFT- LCD PANEL 判定标准/Judgment:

目的: 制定 PANEL 的标准供进料检查、制程检查、客户检查的依据.

Aim: Make the panel standards to material purchasing, process inspecting and customer checking.

范围: 适用于 7.0"TFT LCD 产品.

Ranges: apply to 7.0"TFT LCD modules

作业内容/ Determinant standard and method:

10.1. 判定标准及方法:

Judgment standard and method:

10.1.1. LCD 显示屏伤痕检测方法判定:

The method and determinant of inspecting the nick of panel of LCD:

在 20W 萤光灯下, 距离 PANEL 30CM 处垂直 (或左、右 45 度) 观察, 如果没有看见异物、伤痕, 则判定 OK, 否则 NG.

Inspect vertically (or at 45° angle from left/right) under the light tube (the power is 20 W) in the distance of 30cm to the panel. If there is no nick, it determines "OK", otherwise "NG".

10.1.2. LCD 显示屏黑点, 白点, 色点检测方法与判定:

The method and determinative for black & white & color spots for the Panel of LCD:

1. 检查方法/Inspection Method:

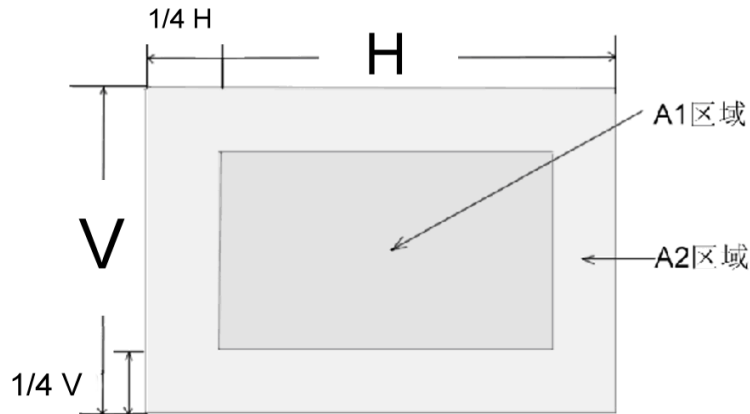
黑点: 在表示点灯状况下, 把检查黑点的 MASK 摆在 LCD 黑点的附近, 目视观察比较大小.

Black spots: under the situation of "turn on the light", set the MASK of black spot inspection near the black spot then compare the big and small by eyes.

白点, 色点: 在表示点灯状况下, 把检查黑点的 MASK 重叠在 LCD 白点 (色点) 处, 目视观察判断白点 (色点) 否可以隐藏.

White & Color spots: under situation of "turn on the light", set the Mask of black spot inspection on the white spot (or color spot) then observe them by eyes if it can hide.

2. 显示屏区域划分/Division of LCD Panel:



注/Note: A1 区域: 图像有效区域中心范围。

A1 area: The center of the available area for the picture

A2 区域: 图像有效区域边缘范围 (四周的区域)。

A2 Area: The edge of the available area for the picture

10.2. 判定选择/Judgment:

欠点直径 (mm) Spot Diameter		允收范围/Accept Range	
		A1 区域/A1 area	A2 区域/A2 area
黑点 Black spot	$d \leq 0.15$	不计/Disregard	不计/Disregard
	$0.15 < d \leq 0.3$	4	4
	$0.3 < d \leq 0.5$	2	3
	$0.5 < d < 0.8$	0	2
白点或色点 White spot or Color spot	$d \leq 0.15$	不计/Disregard	不计/Disregard
	$0.15 < d \leq 0.3$	3	3
	$0.3 < d \leq 0.5$	1	2
	$0.5 < d < 0.8$	0	1

注/Note:

1. 大小: 平均直径= (最长直径+最小直径) /2

Size: Average Diameter= (Max. Diameter + Min. Diameter) /2

2. 关于小欠点密集的时候, 用上述的基准判断。

Using information above as a standard in order to judge while the e spots are dense.

3. 黑斑、白斑: 通过电压的变化来看, 用对比的方法, 对于明显斑点用点规格判断。

Black & White spot: To judge the obvious spots through the change of voltage by comparison.

4. 总的黑点、白点、色点个数: A1+A2 区 ≤4 个。

Total quantity of Black & white & color spot: A1+A2 ≤4.